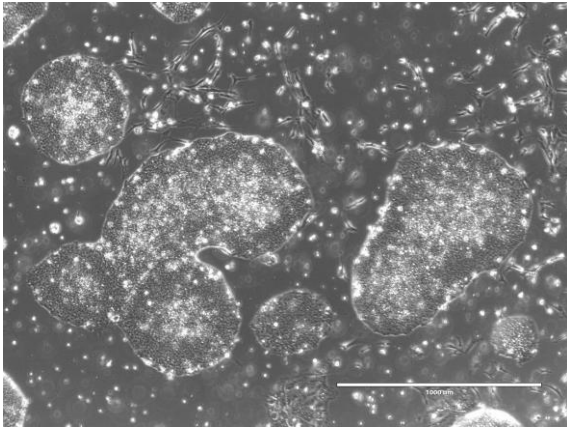
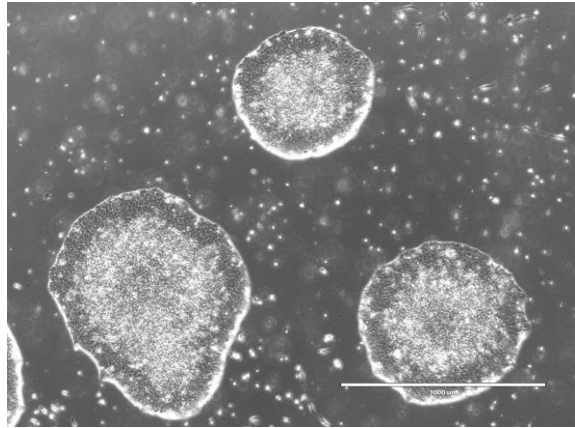


【 CiRA-j-1435 】 Morphology of iPSC colonies

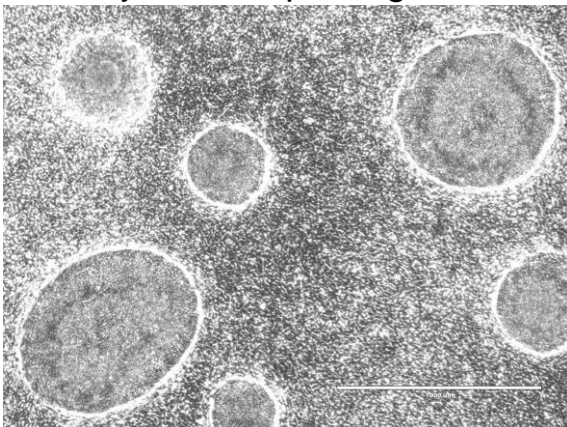
CiRA-j-1435-A: passage-3



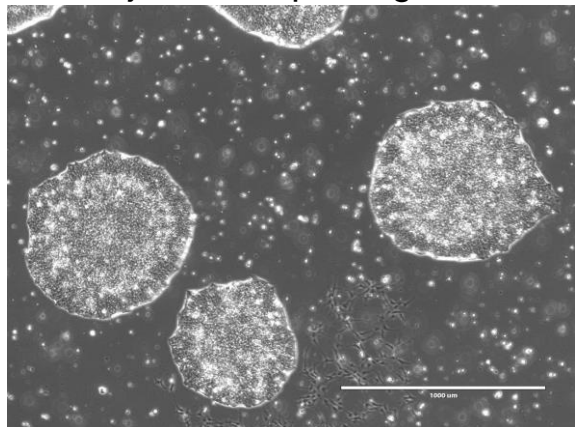
CiRA-j-1435-B: passage-3



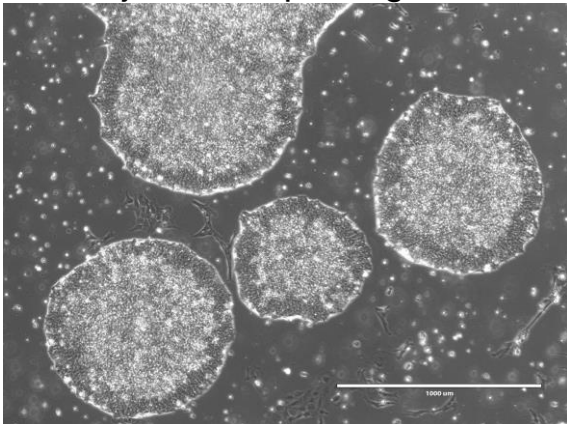
CiRA-j-1435-C: passage-3



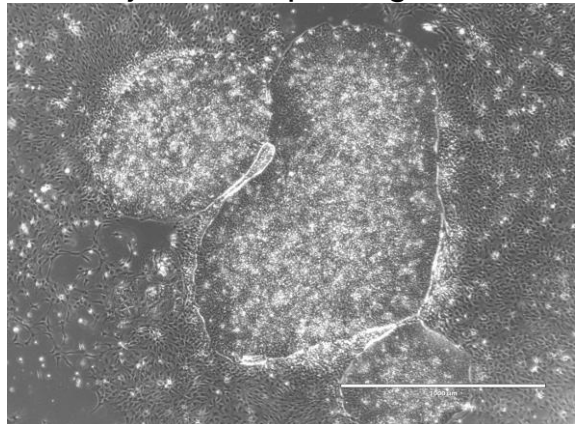
CiRA-j-1435-D: passage-3



CiRA-j-1435-E: passage-3



CiRA-j-1435-F: passage-3



(All images were captured at 4x magnification)